

WASHOE COUNTY Project Newsletter

Development of a Comprehensive Fire and Fire-Based Emergency Medical Services Master Plan



Diamante Partners, LLC



Spring 2009

Diamante Partners LLC <http://www.diamantepartners.com>

Table of Contents

What is the Master Plan Project?

About Diamante Partners LLC

Why do we need a Master Plan?

How long will the Project take?

How do I get more information or get involved in the process?

- Online Information
- Email Alerts
- Calendar of Events
- Comment on our Blog
- Take our survey

Other Resources

Background of Fire and Emergency Medical Services in Washoe County

Links:

Washoe County
<http://www.washoecounty.us/>
Reno Fire Department
<http://www.cityofreno.com/index.aspx?page=189>
Sparks Fire Department
<http://www.ci.sparks.nv.us/governance/departments/fire/>
North Lake Tahoe Fire Protection District
<http://www.nltfpd.net/>
Sierra Fire Protection District
http://www.washoecounty.us/sierrafire/VFD_Home.html

What is the Master Plan Project?

The Public Sector Group of Diamante Partners LLC has been selected by Washoe County to develop a comprehensive Fire and Fire-based Emergency Medical Services Master Plan for the unincorporated areas of Washoe County governed by the County Commission. The master plan will include

recommended methods of improving and/or enhancing existing service delivery and, at a minimum, will include recommendations related to potential consolidations, service equity, opportunities to achieve economy of scale, and enhancements to governance.

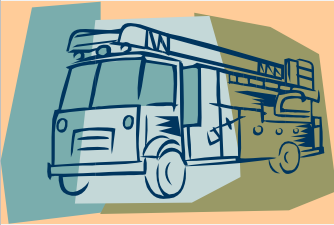
About Diamante Partners LLC

Through its Public Sector Group, Diamante Partners is a company that provides public and private sector entities with comprehensive assessment and planning, business & government continuity planning, training, operational support and exercise services. Diamante is comprised of an unmatched team of professionals with acclaimed and professionally recognized knowledge and proven experience in government planning, including fire, emergency

services and EMS management, continuity planning and assessments, research, analysis and group facilitation.



101 Parkshore Drive, Suite 100
Folsom, California 95630



The Plan will recommend methods of improving and/or enhancing service delivery to the unincorporated areas of Washoe County.

Why do we need a Master Plan?

Last spring, the Sierra Fire Protection District Board of Directors took action to direct staff to undertake development of a comprehensive Fire and Fire Based emergency medical services master plan that will recommend methods of improving and/or enhancing service delivery in the unincorporated areas of the county. The Plan shall at a minimum include recommendations

related to potential consolidations, service equity, opportunities to achieve economy of scale and enhancements to governance. The results and recommendations shall be presented during a joint meeting of the County Commission, the Sierra Fire Protection District Board of Fire Commissioners and the Truckee Meadows Fire Protection District no

less than 12 months from beginning of this project. At the conclusion of the study period, staff anticipates presenting the Commission and Board with a detailed list of options inclusive of a recommended governance model for a fire based all risk emergency services delivery system considered to be optimum for initiation as a long-term strategy.

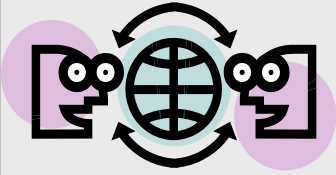
How long will the Project take?

The project is expected to take about 11 months beginning in February 2009 with completion by the end of 2009. Currently, the Diamante Team is in the preliminary phases of the project which includes in-depth research

and information gathering, analysis of data, community input and involvement, evaluation and presentation of recommendations. We are just starting our information gathering, analysis and outreach efforts.

How do I get more information or get involved in the process?

The process to develop the master plan will be extremely inclusive including public meetings and interviews with stakeholders such as Community Advisory Boards, homeowners groups, elected officials, labor unions, volunteer fire departments and others. Following are more details on how to get informed, stay informed and get involved!



Getting community

input on this project is

a top priority !

How do I get more information about this Project?

There are several sources available to you if you want to learn more about this project.

- ✓ Visit the Diamante Partners web page at <http://www.diamantepartners.com>. There you will find background information on the project and related documents.
- ✓ Editions of this newsletter will be posted and distributed with the latest information and updates on the project.

How do I get involved in the process?

Getting your input on this project is a top priority! In order to encourage the broadest participation there are several ways for you to get involved:

- ✓ **Sign up** for the Washoe County email updates at <http://www.co.washoe.nv.us/index/cmail.html> You will receive notification any time there is an update to the project.
- ✓ Calendar of Events
 - Join us** at a Town Hall Meeting
June 17, 2009 at 6:00 pm
Washoe County Commission Chambers
- ✓ Participate in our informal **BLOG** to discuss the project and share your comments with others at <http://washofirefire-basedemsmasterplan.blogspot.com/>
- ✓ **Coming Soon!** in May of 2009 - complete our online **survey** to give us your input.

Other Resources:

Washoe County Point of Contact
Kurt Latipow, Fire Services Coordinator
KLatipow@washoecounty.us

Diamante Partners, LLC
Mike Warren, Project Manager
mwarren@diamantepartners.com

Background of Fire and Emergency Medical Services in Washoe County

Washoe County is a growing area located along the eastern slopes of the Sierra Nevada Mountains in western Nevada. The County covers an area of 6,900 square miles in the northwest section of the State bordering California and Oregon and has a population of approximately 400,000. The county seat is the City of Reno, the third largest city in Nevada with a population of approximately 210,000. The City of Sparks is the only other incorporated city in Washoe County, with a population nearing 85,000. There are approximately 105,000 residents of Washoe County who live outside the two cities within the unincorporated areas of the County. The County Commission provides oversight and policy direction to two Fire Protection Districts and one County General fund program that provide fire based emergency and EMS service within the county.

The **Sierra Fire Protection District** provides full service emergency services for the communities of Verdi, Galena and West Washoe Valley as well as Anderson Acres and the west side of the Cold Springs Valley. The Sierra Fire Protection District has staffed three full time Stations providing emergency services 24 hours a day, 365 days a year. The District is also served by five Volunteer Fire Departments who assist the career personnel throughout the District.

The **Truckee Meadow Fire Protection District** provides all risk emergency services for the communities of Pleasant Valley, Hidden Valley, East Washoe Valley, Lemon Valley, Silver Lake, Sun Valley and Cold Springs. The District Currently contracts with the city of Reno for the provision of administration and daily operations of the district which includes six full time fully staffed stations and 8 volunteer stations.

The **County Fire Suppression Program** provides support to three volunteer fire departments that are located outside the boundaries of any of the organized fire protection districts. These three departments provide fire based emergency response to the communities of Red Rock/Rancho Haven, Sutcliff and Gerlach. The service level in Gerlach includes a fire department operated ambulance.

CONTACT US:

Diamante Partners, LLC
101 Parkshore Drive, Suite 100
Folsom, California 95630
(916)932-2124

info@diamantepartners.com

SMOKE DETECTORS HELP SAVE LIVES